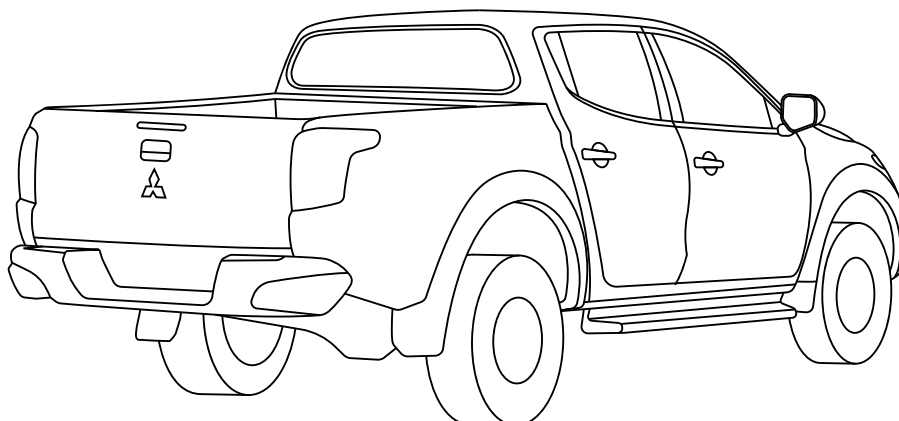


**MITSUBISHI TRITON MQ / MR  
Dust Defence Kit  
With and Without Ute Liner  
Installation Instructions**



**Kit Number: 037037**

Installation Time:  
Approx. 30min Without Ute Liner Fitted  
Approx. 1 hour With Ute Liner Fitted

**Place these instructions in vehicle's glove box after installation is complete**

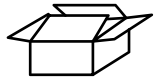
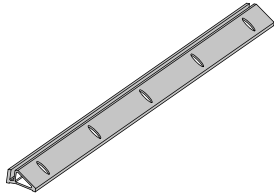
**PLEASE REFER TO PAGE 2 OF THIS INSTRUCTION FOR A LIST OF PARTS AND QUANTITIES.**

**IMPORTANT!**

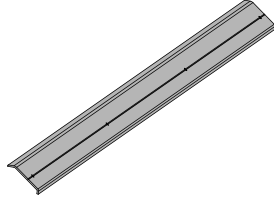
- Read instructions carefully before installation.
- It is strongly recommended that installation is conducted by an authorized dealer.
- This product must be installed exactly as specified in these instructions. Failure to do so may result in improper fit and/or retention.

**RECOMMENDED TOOL LIST - (Not Supplied in Kit)**

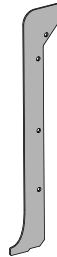
- Drill and Ø5.5mm Drill Bit
- Sharp Scissors or Sharp Knife
- 8mm Spanner & Socket
- Masking Tape
- Rivet Gun
- Marking Pen
- Centre Punch
- Rubber Mallet
- Torque Wrench

**PARTS CHECK SHEET****PARTS IN MAIN CARTON**

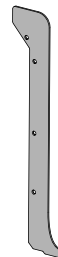
Base  
Extrusion  
Qty - 1



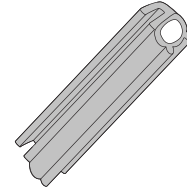
Cover Base  
Extrusion  
Qty - 1



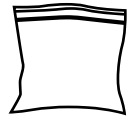
Tub Side  
Plate LHS  
Qty - 1



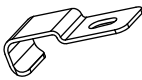
Tub Side  
Plate RHS  
Qty - 1



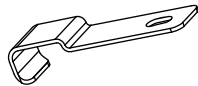
Pinch-weld  
Bulb Seal  
Qty - 1



Fitting Kit  
Qty - 1

**PARTS IN FITTING KIT**

Retention Clip  
Short  
Qty - 4



Retention Clip  
Long  
Qty - 2



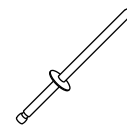
Self-tapping  
Screw  
Qty - 4



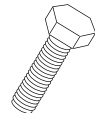
M5 Large  
Washer  
Qty - 8



M5 Small  
Washer  
Qty - 12



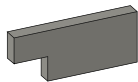
Rivet  
Qty - 3



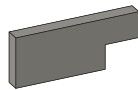
M5x30 Hex  
Head Screw  
Qty - 10



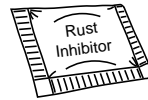
M5 Nylock  
Nut  
Qty - 10



Foam Pad RH  
Qty - 1



Foam Pad LH  
Qty - 1



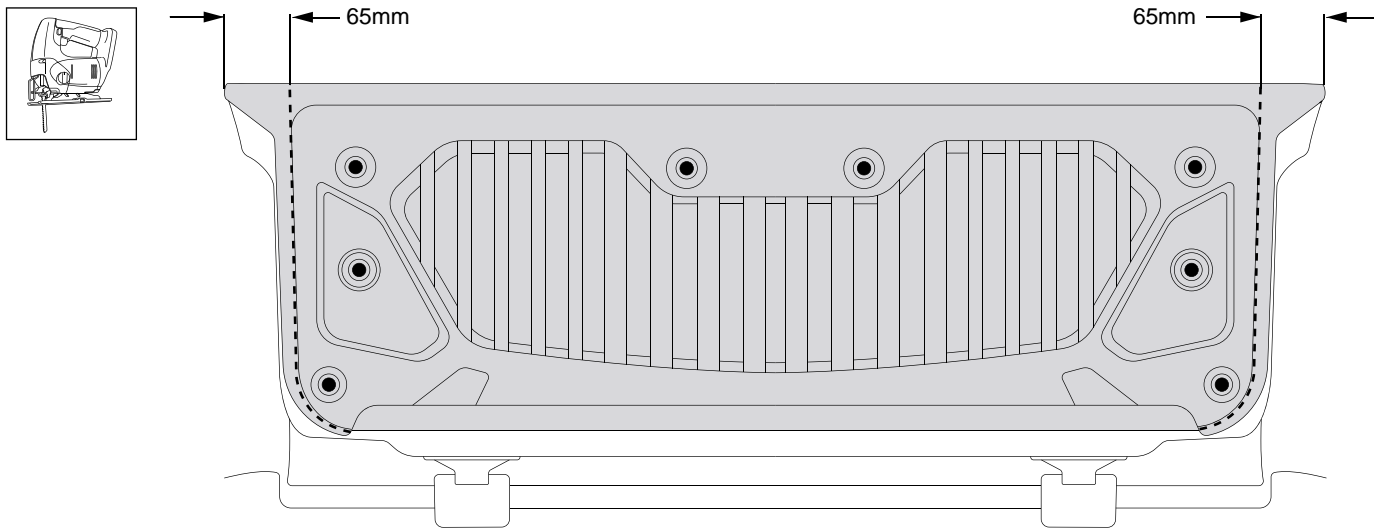
Rust  
Inhibitor  
Qty - 1



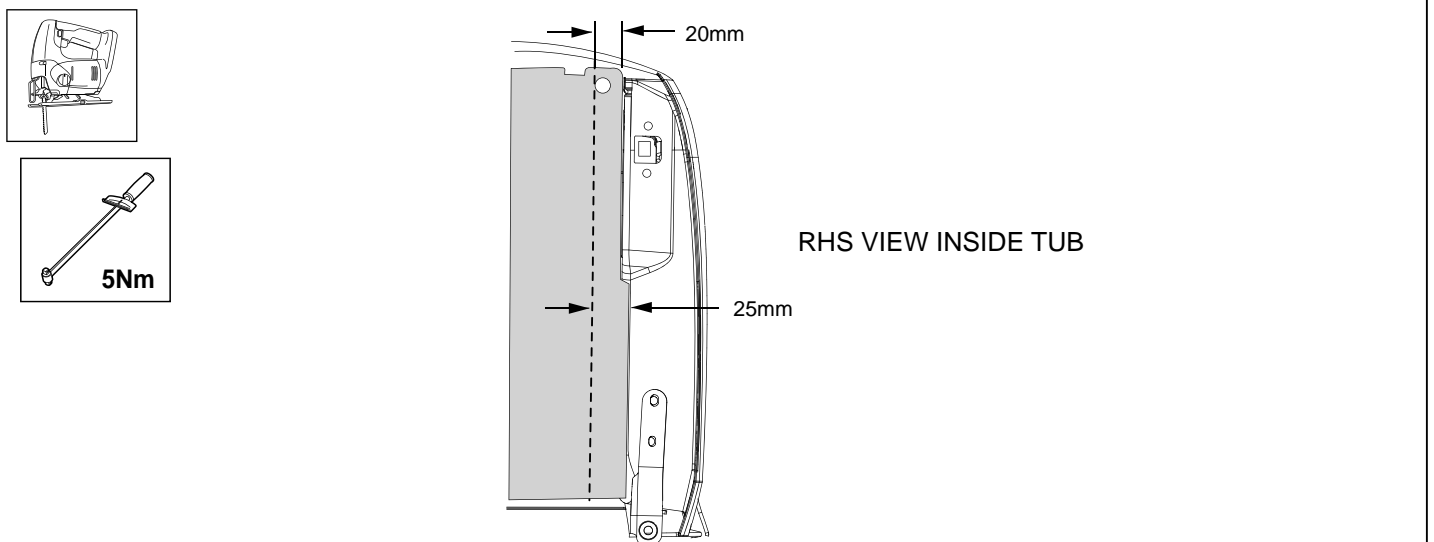
Automotive  
Surface Cleaner  
Qty - 1



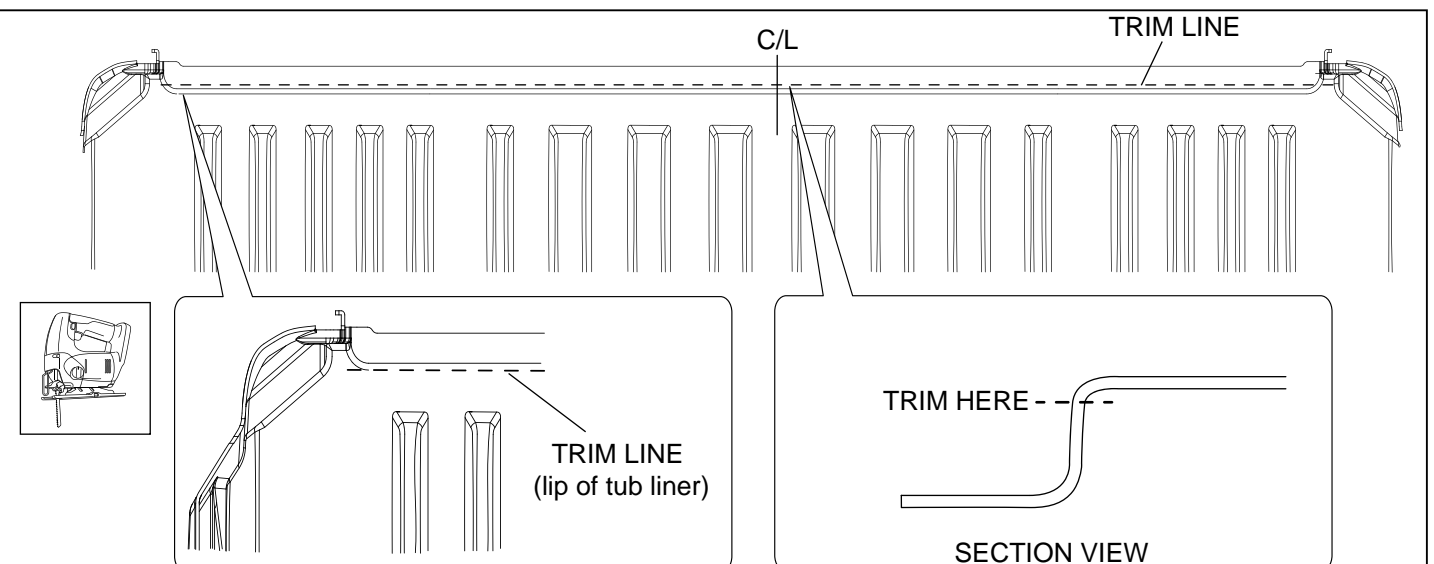
Primer  
Qty - 1

**FOR VEHICLES WITH UTE LINER PLEASE COMPLETE STEPS A B C****FIG. A**

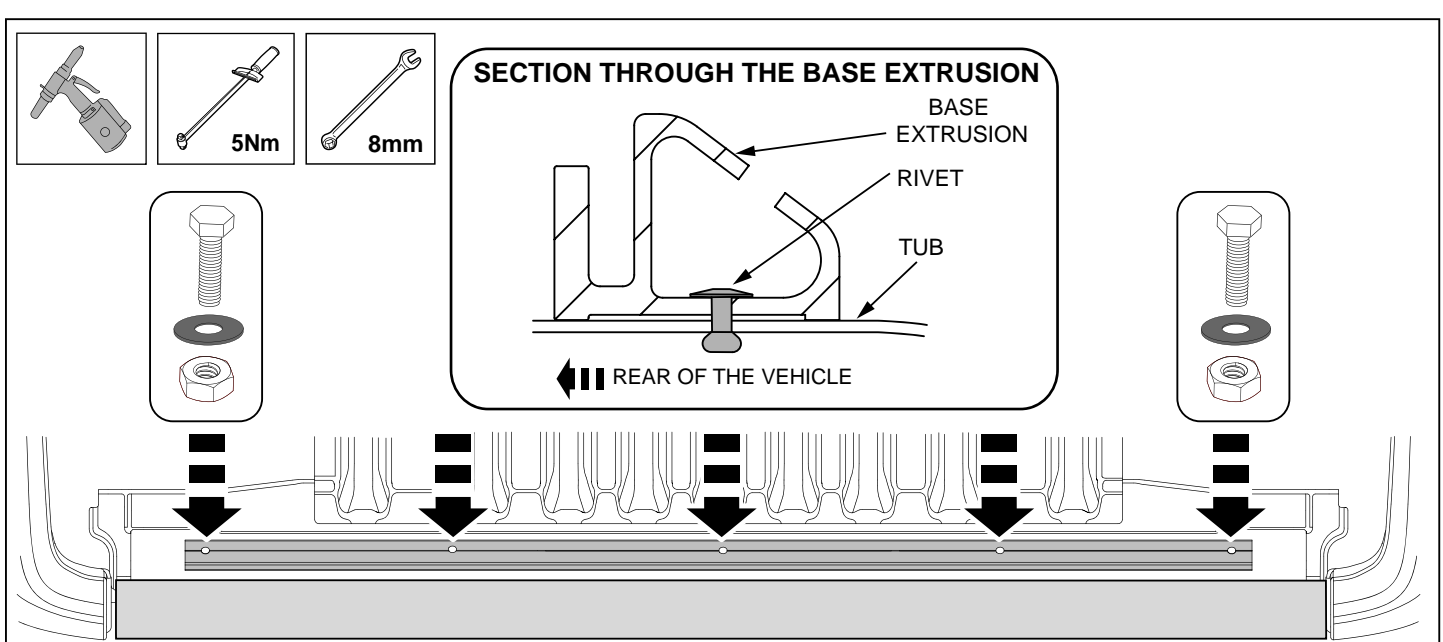
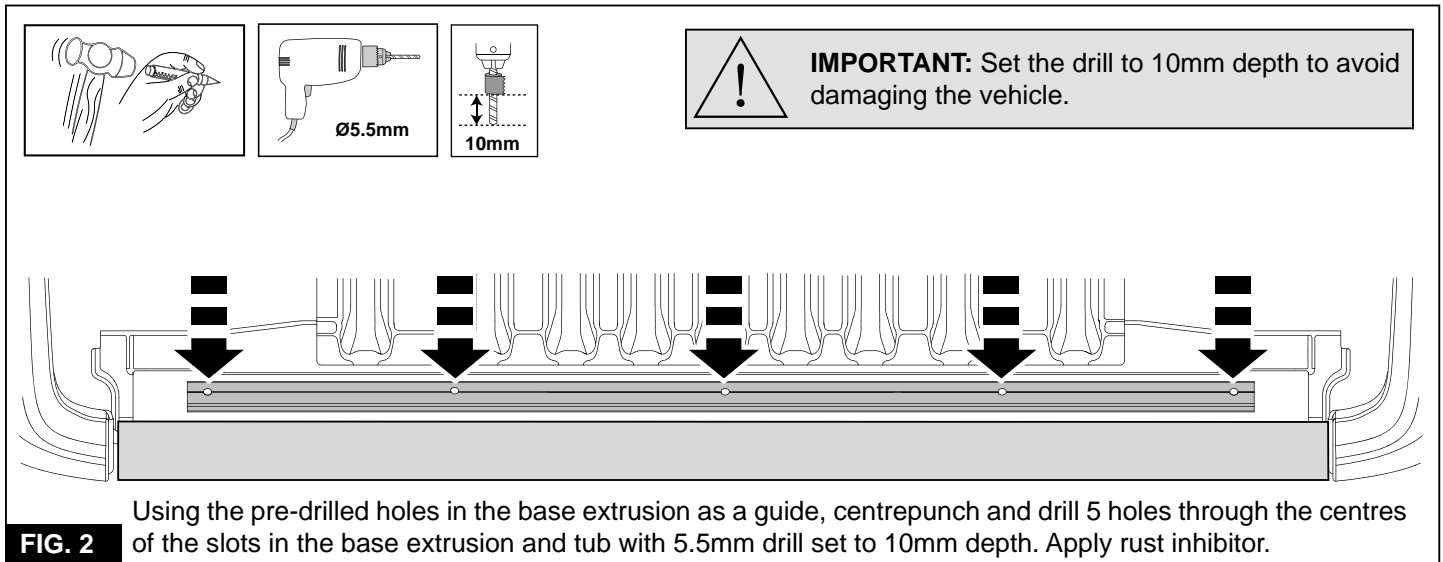
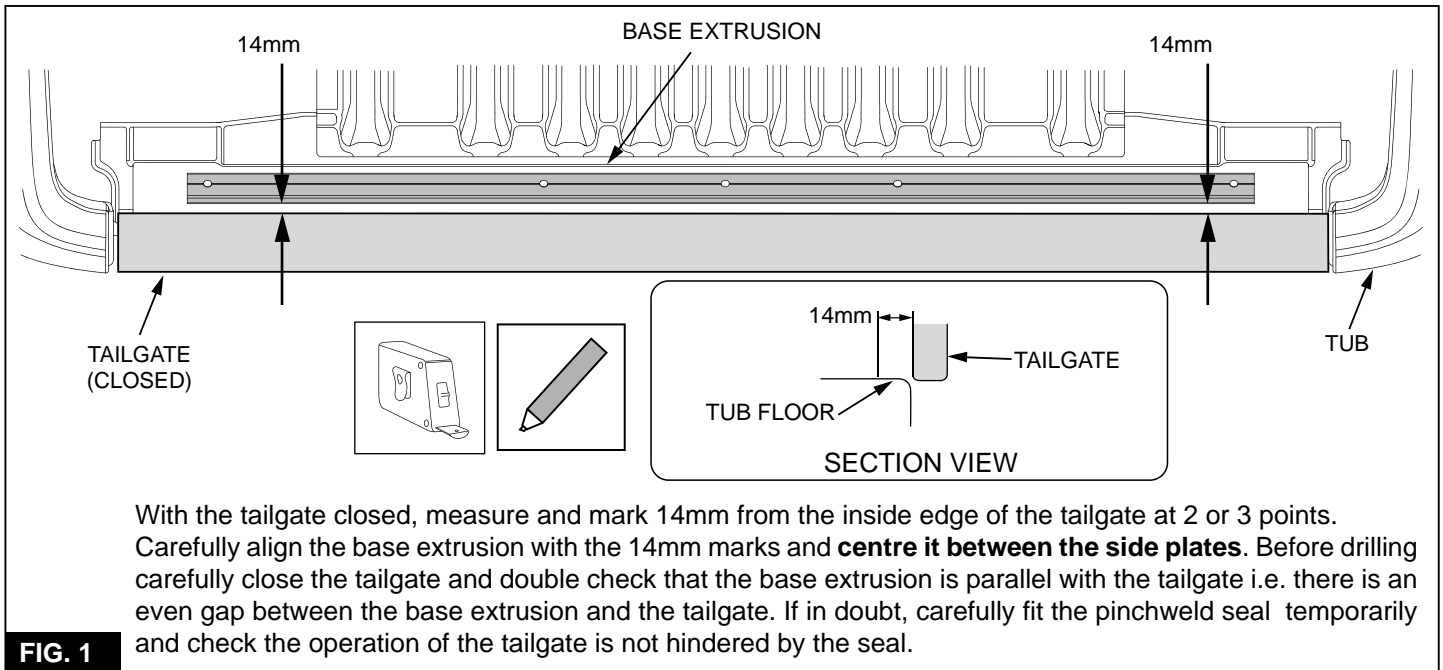
Remove the ute liner from the tailgate. Mark the tailgate liner as shown using white pen, following the detail in the liner. Trim the liner using jigsaw.

**FIG. B**

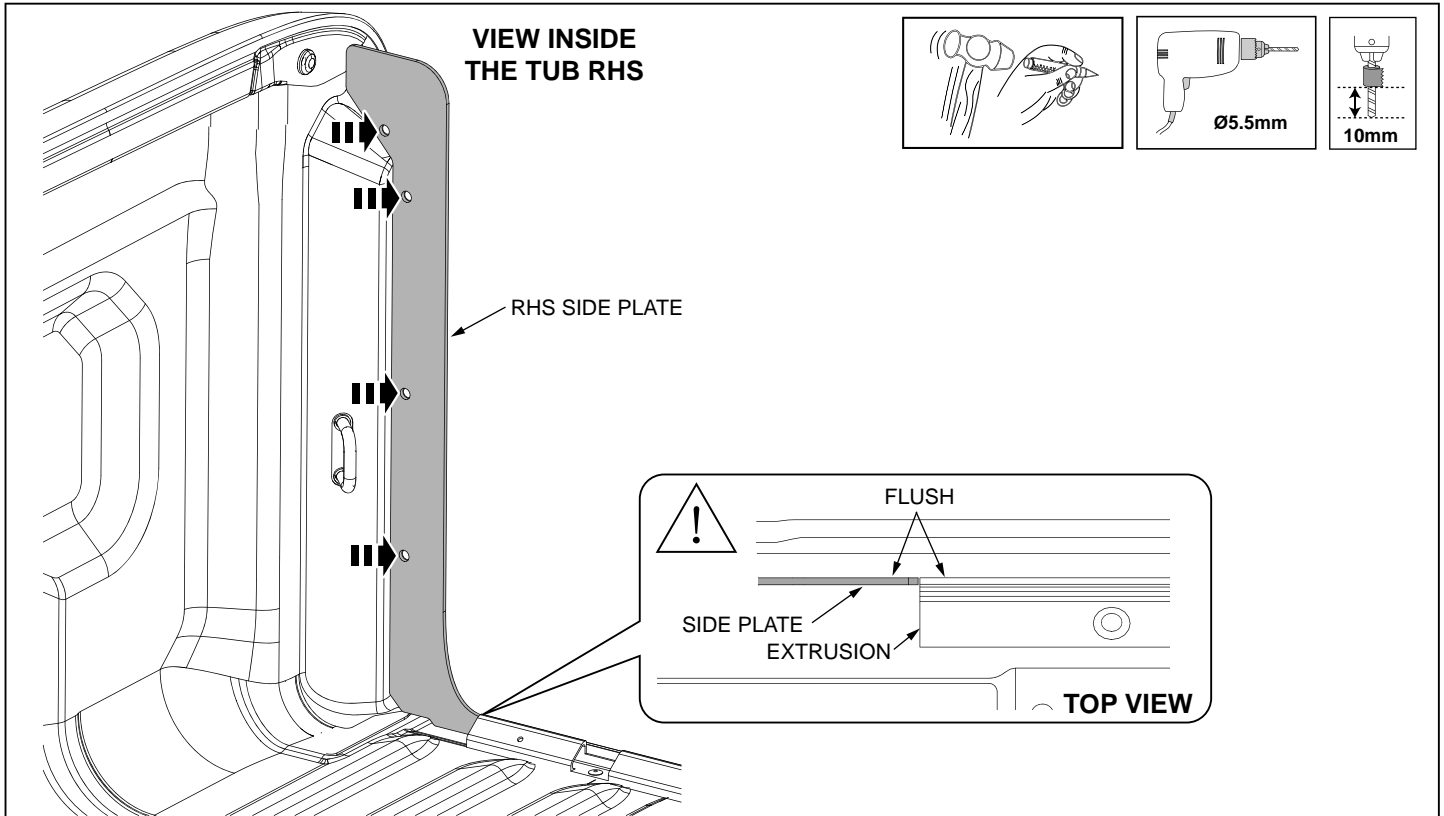
Mark the tubliner 20mm and 25mm from the step inwards from the edge as shown using white pen.

**FIG. C**

Remove the ute liner from the tub and retain all the hardware. Trim along the top lip of the ute liner floor.

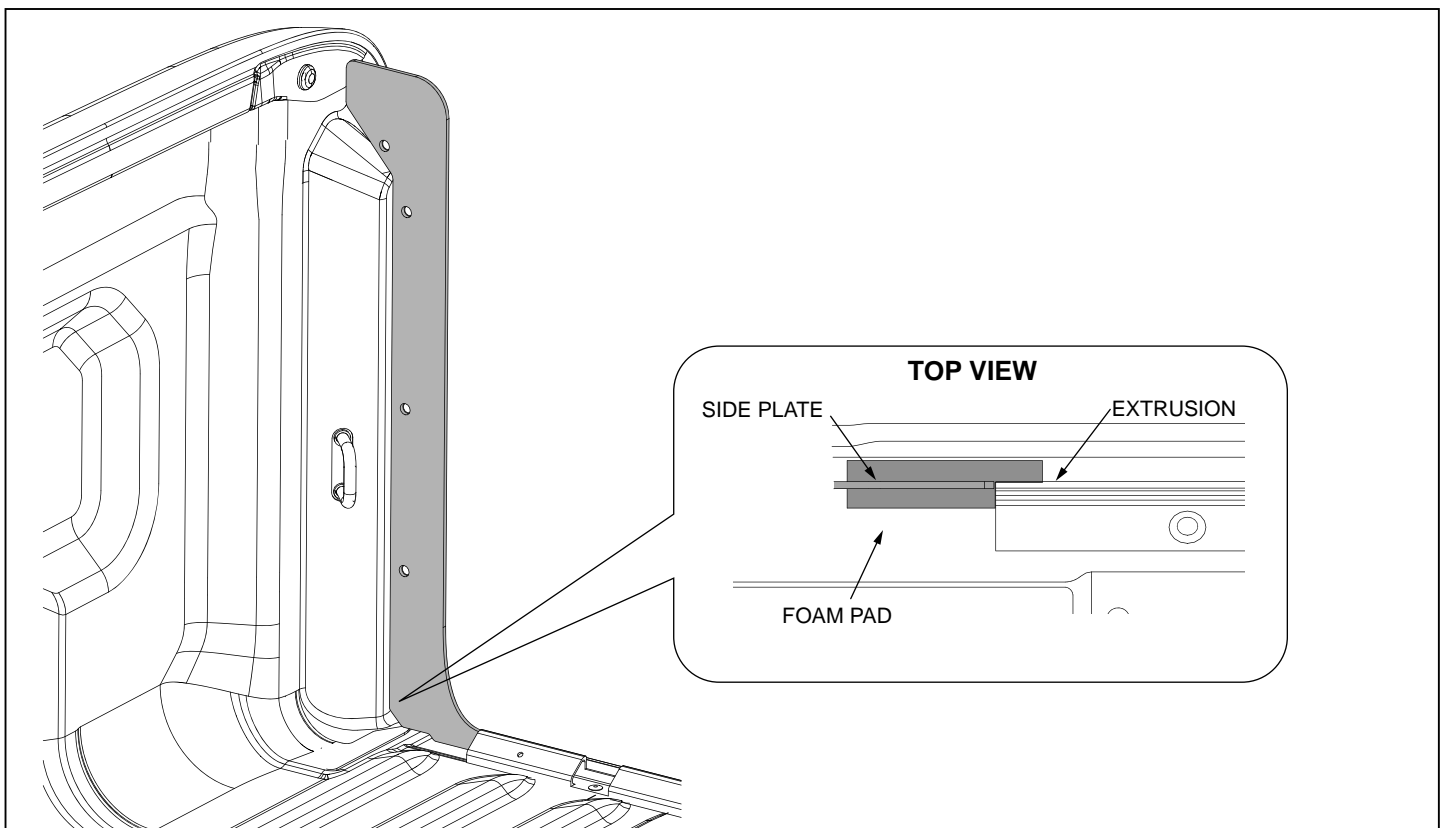


**FIG. 3** Secure the extrusion to the tub using rivets on the middle 3 holes. Secure the extrusion on the outermost positions using M5 screws, washers and nuts as shown.



Trial fit tub side plates to the inside of the tub as shown. The side plate should be placed on the tub floor and hard against the side of the tub. Mark and centre punch the centre points of four (4) hole positions on each side. Remove the plates and drill with  $\varnothing 5.5\text{mm}$  all holes centre marked locations. Apply rust inhibitor to all drilled holes. RHS shown, repeat for LHS.

**FIG. 4**



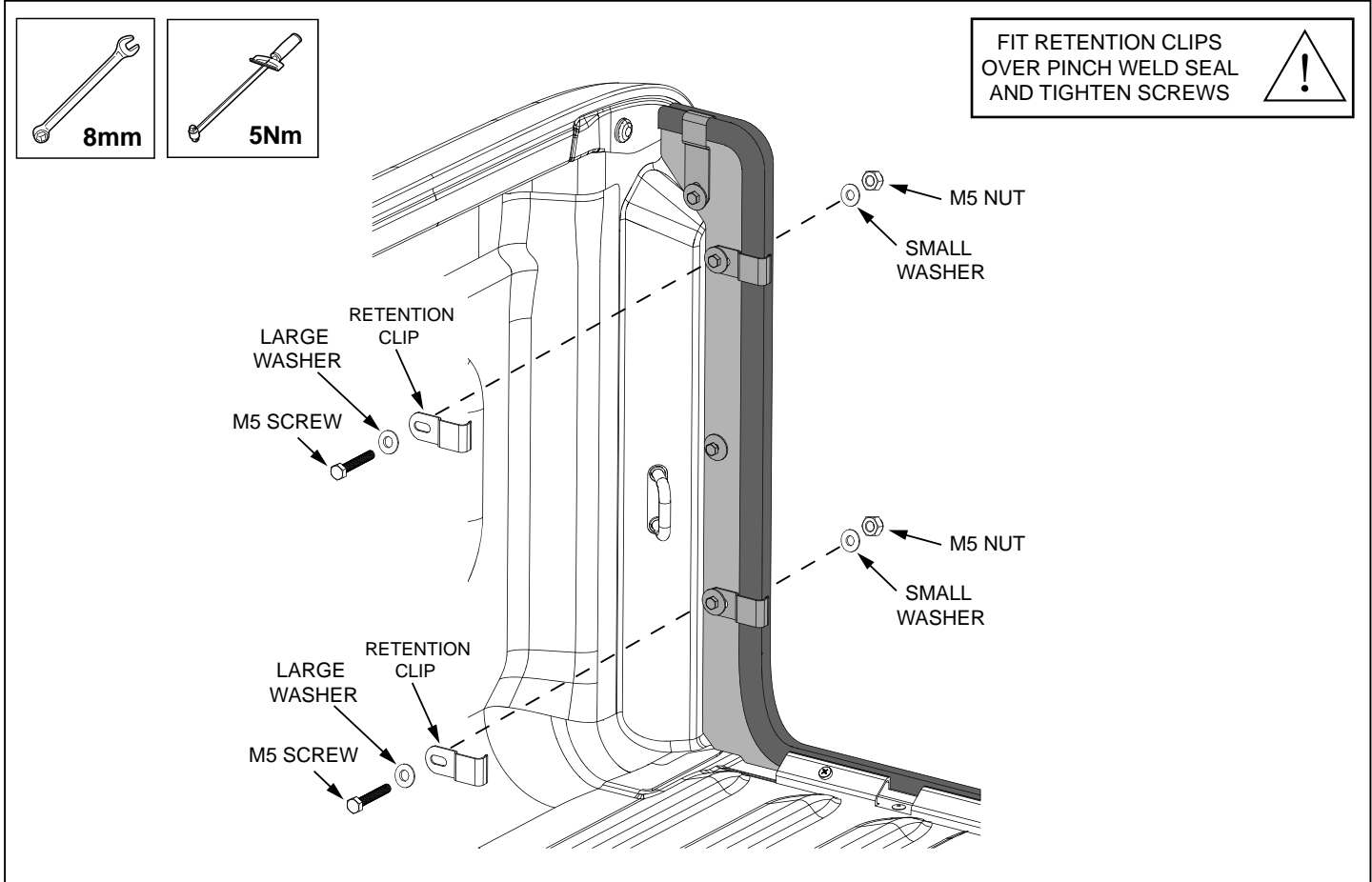
Clean the surface where the foam pad will go using the alcohol wipe, then apply primer. The foam pad should be applied flush between the extrusion and the tub flange. **Note: The side plates sit on top of the foam pads.**

**FIG. 5**

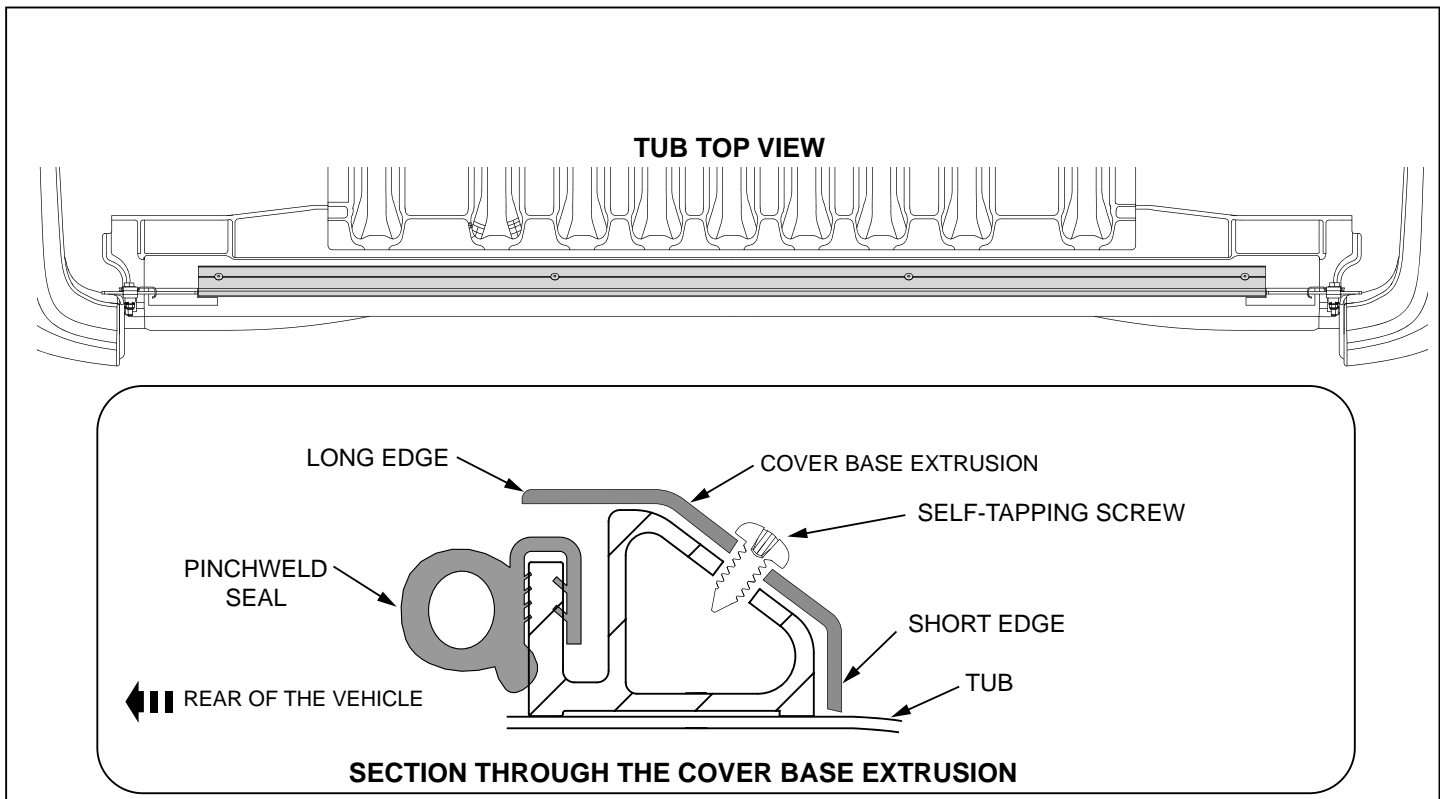
**FIG. 6** Fit tub side plate to the vehicle tub & align the holes. Secure with M5 screw, washer and nut as shown. **Torque to 5Nm. Note:** EPDM foam tape faces rearward. RHS shown, repeat for LHS.

**FIG. 7** Install the pinchweld seal starting from the top of the RHS side plate. Use a rubber mallet to tap the pinchweld onto the side plates and base extrusion. Trim any excess pinchweld seal.

**FIG. 8** Position the top (LONG) retention clip over the pinchweld and screw into place as shown RHS. Repeat for LHS. **NOTE:** If the dust defence kit is fitted with a Rolltrac, check gap between Rolltrac hand rail and the top of the retention clip - should be at least 1mm. If less than 1mm, fit the M5 screw, washer and M5 nut without the retention clip.



**FIG. 9** Position the 2 short retention clips over the pinchweld and screw into place as shown RHS. Repeat for LHS.



With the longer edge to the top, fit the base extrusion cover over the pinchweld seal and align the cover with the pre-drilled holes in the base extrusion. Fit the cover into place using the four self-tapping screws. Reinstall the tubliner.

**FIG. 10**